

# WETROOM WALLCOVERINGS



Wallcoverings that form part of a complete wet room concept for use in education, healthcare, sports facilities, collective housing and hospitality



## SENSORY BENEFITS

- Unique all-in-one concept: coordinated floors, walls and accessories
- Mix and match with other Tarkett ranges (Tapiflex & Acczent Evolution, Tapiflex & Acczent Excellence, ProtectWALL)

## FUNCTIONAL BENEFITS

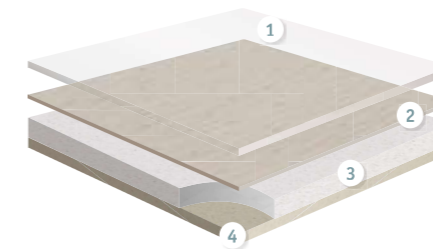
- Hygienic and clean
- Hard-wearing and watertight
- Easy to maintain

## ENVIRONMENTAL BENEFITS

- Healthier interior with optimal indoor air quality
- 100% recyclable

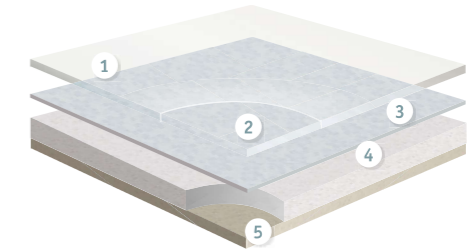
TECHNICAL DATA	STANDARDS	Aquarelle Wall HFS	Aquarelle Wall Aquarelle Wall Borders
<b>Classification</b>			
Type of wall covering	EN 233	Heterogeneous vinyl compact wall covering	
<b>Characteristics</b>			
Total thickness	ISO 24346	0.92mm	
Wear layer thickness	ISO 24340	0.12mm	
Total weight	ISO 23997	1 500g/m <sup>2</sup>	
<b>Technical performance</b>			
Dimensional stability	ISO 23999	Lengthwise: ≤ 1% Widthwise: ≤ 0.40%	
Reaction to fire	EN 13501-1	B-s2,d0 on non metal A1 or A2-s1,d0 class substrate	C-s2,d0 on gypsum plasterboard A1 or A2-s1,d0 substrate
Seam strength	EN 684	≥ 150 N/50mm	
Chemical resistance	ISO 26987	Good resistance Leger (1)	Not affected (0)
<b>Form of delivery</b>			
Form of delivery	EN 259	Rolls: 35lm x 2m Borders: 49cm x 30-35m	Rolls: 35lm x 2m Borders: 49cm x 35m
Colours	—	32 + 2 borders	30 + 13 borders

The above information is subject to modifications for the benefit of further improvement (02/2017). For more detailed technical information, please contact Tarkett.



## AQUARELLE WALL HFS

- 1 Transparent wear layer
- 2 Printed film
- 3 Intermediate layer
- 4 Backing layer



## AQUARELLE WALL

- 1 TopClean XP™ Pur reinforced surface:  
*Excellent resistance to scuffing, soiling and staining and easy maintenance.*
- 2 Transparent wear layer
- 3 Printed film
- 4 Intermediate layer
- 5 Backing layer



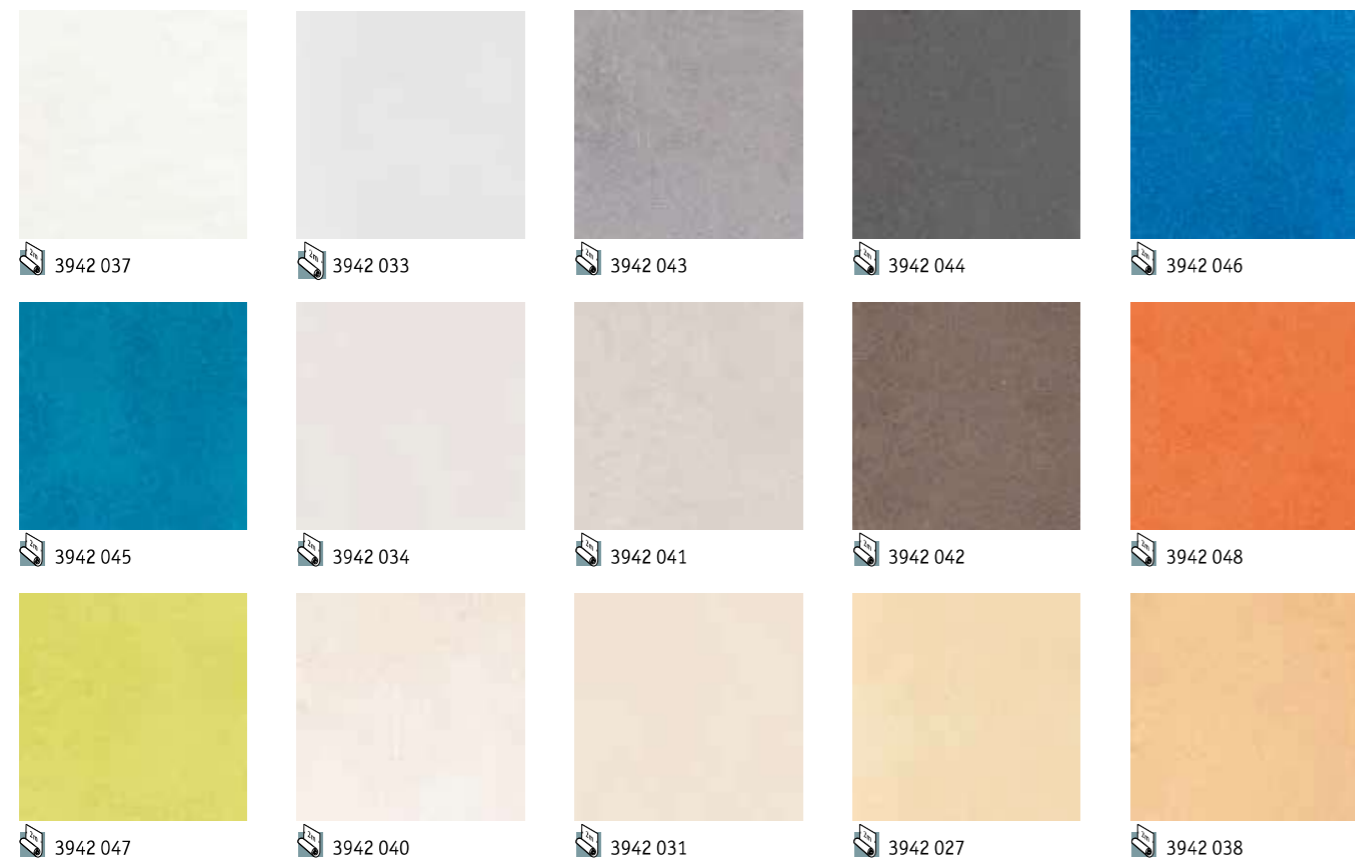
# AQUARELLE WALL HFS



Kiruma - 3942046



## Kiruma



TECHNICAL DATA	STANDARDS	Aquarelle Wall HFS
<b>Classification</b>		
Type of wall covering	EN 233	Heterogeneous vinyl compact wall covering
<b>Characteristics</b>		
Total thickness	ISO 24346	0.92mm
Wear layer thickness	ISO 24340	0.12mm
Total weight	ISO 23997	1 500g/m <sup>2</sup>
<b>Technical performance</b>		
Dimensional stability	ISO 23999	Lengthwise: ≤ 1% Widthwise: ≤ 0.40%
Reaction to fire	EN 13501-1	B-s2,d0 on non metal A1 or A2-s1,d0 class substrate
Seam strength	EN 684	≥ 150 N/50mm
Chemical resistance	ISO 26987	Good resistance leger (1)

The above information is subject to modifications for the benefit of further improvement (02/2017).  
For more detailed technical information, please contact Tarkett.

## AQUARELLE WALL HFS

### Main Product Features

- Waterproof installation, ideal for wet commercial applications
- Unique wetroom concept: walls, floors, borders and accessories available in warm and vivid tones to coordinate with Optima Multisafe, Granit Multisafe, Granit Safe.T & Multisafe Aqua
- Fire resistant: B-s2 d0
- Hygienic and easy to maintain

### Sustainability Tag



### Logistics Information

Available in rolls  
Rolls length: approx. 35lm

Available in rolls  
Rolls length: approx. 35lm

Laying direction:

### General Information



### Aquarelle Wall HFS borders





# AQUARELLE WALL HFS



Graphic Lines - 3942058



## Vogue



3942 050



3942 051



3942 052



3942 053



3942 054



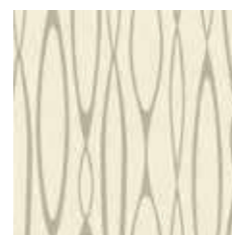
3942 055



3942 056



3942 057



3942 058



3942 059

## Bubbles



3942 061



3942 062



3942 063



3942 064

TECHNICAL DATA	STANDARDS	Aquarelle Wall HFS
<b>Classification</b>		
Type of wall covering	EN 233	Heterogeneous vinyl compact wall covering
<b>Characteristics</b>		
Total thickness	ISO 24346	0.92mm
Wear layer thickness	ISO 24340	0.12mm
Total weight	ISO 23997	1 500g/m <sup>2</sup>
<b>Technical performance</b>		
Dimensional stability	ISO 23999	Lengthwise: ≤ 1% Widthwise: ≤ 0.40%
Reaction to fire	EN 13501-1	B-s2,d0 on non metal A1 or A2-s1,d0 class substrate
Seam strength	EN 684	≥ 150 N/50mm
Chemical resistance	ISO 26987	Good resistance leger (1)

The above information is subject to modifications for the benefit of further improvement (02/2017).  
For more detailed technical information, please contact Tarkett.

## AQUARELLE WALL HFS

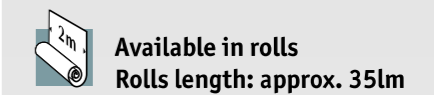
### Main Product Features

- Waterproof installation, ideal for wet commercial applications
- Unique wetroom concept: walls, floors, borders and accessories available in warm and vivid tones to coordinate with Optima Multisafe, Granit Multisafe, Granit Safe.T & Multisafe Aqua
- Fire resistant: B-S2 d0
- Hygienic and easy to maintain

### Sustainability Tag



### Logistics Information



### General Information



3942 060

